



LITON[®]

L I G H T I N G

LED DOWNLIGHT PORTFOLIO

LITON Lighting LED Downlighting Portfolio

LED Solutions for Every Downlight Application

As an emerging leader in LED lighting, LITON is at the forefront of application driven design. Innovative LED technology combined with familiar form factors allow LITON'S LED product portfolio to cover virtually every indoor application and budget.

LITON LED Downlights offer more of the options preferred in traditional lighting sources. For example, Liton manufactures more adjustable and wall wash LED trims than any other manufacturer and for every Comercial and Residential application.

LITON new **UniDim™** universal LED dimming technology is just one of the many dimming options offered. LITON LED products are compatible with products from the best dimming system manufacturers in the lighting industry including Lutron and Leviton.

Every LITON LED Downlight is assembled at our factory in Los Angeles, California insuring total quality control and fast delivery.



LITON LED Downlight Comparison



	Architectural	Mini Arc	General Purpose	Economy (GU24)
LED STYLE	SÖL LENS (Single Optical Lens)	SÖL LENS (Single Optical Lens)	3, 6 or 9 LED Array	LARGE SÖL LENS (Single Optical Lens)
LED Brand	Bridgelux	Bridgelux	Edison-Opto	Nichia
Applications	Commerical and Spec Grade	High-End Residential and Commercial	Residential and Light Commercial	Economy Residential, Low Budget Light Commercial
Main Benefits	Deeply recessed LED provides 50° glare cut-off. Highly accurate color temperature, High CRI Option, UniDim and other dimming options, Available for new construction, remodel and retrofit applications.	MR16 size LED fixture outperforms 50W MR16 lamps and saves over 70% energy. CCT, High CRI and Dimming options, Die-Cast Aluminum trims in designer finishes are perfect for high-end residential applications	More options than any comparable product including: Sizes, Trim Styles, Trim Colors, Beam Spreads, Input, CCT and CRI options, Housing types, Dimming choices, more control over the lit environment.	Affordable, compares to similar product in price and performance. Available for New Construction, Remodel and Retrofit. GU24 Base conforms to Title 24 and energy rebate requirements.
Available Sizes	4", 6" and 8"	2", 3", 4"	2", 3", 4", 5", 6"	4", 5" & 6"
Available Wattages	14W, 19W, 25W, 40W	12W	2": 4W/6W 3": 4W/6W/8W 4", 5", & 6": 10W/15W 6": 16W	10W/15W
Lumen Packages	900Lm - 3400Lm	540Lm - 660Lm	180Lm - 1200Lm	450 Lm - 650Lm
Beam Spreads	30° and 50°	25° and 40° and Assymetrical	8°, 25°, 45°, 60°, 120°	120°
Voltages	120V-277V, 347V	120V, 120V-277V	120V, 120V-277V	120V Only
Dimming Options	UniDim, 0-10V, ELV, Incandescent	DIN/ELV and DHL	0-10V, ELV, Incandescent	ELV/Incandescent
Emergency Back Up?	Yes	Yes	Yes	No
Remodel Available?	Yes	Yes, 2" & 3" only	Yes	Yes
Retrofits?	Yes, Architectural Frame-in Kits	No	Yes, Residential Housings	Yes, Residential Housings
Warranty	5 years	5 years	3 years	3 years
Energy Star	Yes, 25W only	Pending	No	Yes
IC	No	No	Yes	Yes
Title 24 Compliant	Yes	Yes	Yes	Yes
Price Level	\$\$\$	\$\$\$	\$\$	\$

LITON Architectural LED Downlight



► BENEFITS

The deeply recessed design of LHALD Architectural LED Downlights reduces glare and blocks direct view of the LED from almost any angle creating a comfortable lit environment. Lumen output, efficiency and light quality exceed that of a comparable specification grade CFL or HID Downlight.

► APPLICATION

Recommended for High-end Commercial applications where high lumen output, light quality, controlled beamspread and low-glare are required.

► PRODUCT HIGHLIGHTS

- Powerful, high output lumen packages up to 2000lm. 3400lm coming soon!
- LEDs are binned to within 3-Step MacAdam Ellipses (SDCM) for color consistency between fixtures
- Energy Star qualified @ 25 Watts in 4", 6" & 8" apertures!
- Dimming and Emergency Battery Back-up Available
- Architectural Retrofits up to 10" available with dimming options



► PRODUCT FEATURES

- **Led Style:** Large SOL Lens (Single Optic Lens)
- **LED Brand:** Bridgelux
- **Lumen/Wattage:** 13W – 40W, 900lm – 3400lm
- **Color Temp:** 3000K Standard, Others Optional
- **CRI:** 80 CRI, 90 High CRI Option
- **Apertures:** 4", 6" & 8" Housings, 6", 8" & 10" Retrofits
- **Dimming:** 0 – 10V; Lutron Hi-Lume, ELV, UniDim
- **Trim Styles:** Reflector, Wall Wash, Adjustable, Deco Glass
- **Reflector Colors:** All White, Satin Reflector White Flange, Satin



► FRAME-IN KIT PREFIX

- **LHALD**



► REFLECTOR TRIM PREFIX

- **LRLAD**



Liton Mini-Arc LED Downlights



► BENEFITS

The compact design of the Mini-Arc LED Series brings high lumen output and energy efficiency to small aperture downlight applications. Easily exceeds the performance of a 50W MR16 fixture. More sustainable options than low voltage fixtures.

► APPLICATION

Recommended for high-end residential and commercial applications requiring MR16-style accent lighting.

► PRODUCT HIGHLIGHTS

- Great for any space where small aperture and high lumen output is required.
- Dimming and Emergency Battery Back-up Available.

- Use for**
- **Retail Displays**
 - **Cove Lighting**
 - **Cabinetry**
 - **Jewelry Displays**
 - **Reception Areas**
 - **Lobbies**
 - **Libraries**
 - **Museums**
 - **Nightclubs**
 - **Restaurants & Bars**



► PRODUCT FEATURES

- **Led Style:** Miniature SOL Lens (Single Optic Lens)
- **LED Brand:** Bridgelux
- **Wattages:** 12W; Up to 600 Lumens!
- **Color Temp:** 3000K (others special order)
- **CRI:** 80CRI, High 90CRI option
- **Apertures:** 2", 3" & 4"
- **Beam Spreads:** 25°, 40° or Asymmetrical
- **Trim Styles:** Reflector, Baffle, Adjustable, Wall Wash, Pin Hole, Shower
- **Trim Colors:** White, Black, Satin Natural, Copper, Mocha
- **Dimming Options:** 120V 2-wire, ELV, 0-10V, HiLume

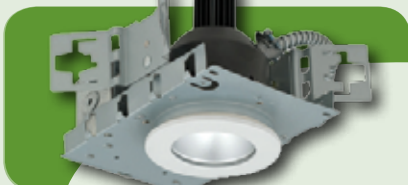


► HOUSING PREFIXES

- **LHBLD, LHJLD**

► TRIM PREFIXES

- **LR*L**



LITON General Purpose LED Downlights

illuminates like:
MR16, PAR Lamp;
A Lamp with B60-B120 option

► BENEFITS

Economical Liton General Purpose LED Downlights offer variety and options not commonly found in LED products in this price range. A multitude of apertures, trim styles, beamspreads, input voltages, lumen packages, dimming options and power options make this downlight the most flexible in its class.

► APPLICATION

Recommended for any residential or light commercial project where economy, energy efficiency, performance and options comparable to incandescent, low voltage and CFL fixtures are desired.



► TRIM FEATURES

- **LED Style:** 3, 6 or 9 LED Modules
- **Wattages/Lumens:** 4W – 16W; 270LM – 1200LM
- **Color Temp/CRI:** 3000K; 80CRI (others Special Order)
- **Apertures:** 2", 3", 4", 5" & 6"
- **Beam Spreads:** 8°, 12°, 25°, 45°, 60°, 120° (SOL)
- **Trim Styles:** 7
- **Trim Colors:** White, Black, Satin Natural, Copper, Mocha
- **Dimming Options:** 120V 2-wire, ELV, 0-10V, Hi-Lume



► TRIM PREFIX

- **LRLD**



► HOUSING FEATURES

- **Sizes:** 2", 3", 4", 5" & 6"
- **Input:** 120V or 120V/277V
- **Housing Socket:** Molex type
- **LED Driver:** Mounted in or on the J-Box
- **Housing Types:** New Construction & Remodel
- **Available Ratings:** IC Airtight (3", 4", 5" & 6")
- **Dimming Options:** 120V 2-wire, ELV, 0-10V, Hi-Lume
- **Emergency Battery Backup Option**



► HOUSING PREFIX

- **LHLD**



Liton GU24 Base Economy LED Downlight



► BENEFITS

Budget Friendly. Can be used in New Construction, Remodel and Retrofit applications without losing the warmth and functionality of traditional CFL or Incandescent light sources. Uses up to 65% less energy and delivers more lumen output than comparable R20, R30 and A19 Incandescent or 13W–26W CFL lamps.

► APPLICATION

Recommended for general ambient lighting in large areas with average ceiling heights in cost sensitive applications. Comparable to R20, R30 and A19 incandescent or 13W-26W CFL lamps in performance and perfect for living rooms, kitchens, hallways and anywhere that needs warm, energy efficient lighting.

► PRODUCT HIGHLIGHTS

- Easy-to-Install, universal GU24 Base, trim fits most competitor's housings.
- Great over-the-counter product for Wholesalers & Distributors.
- Good choice for budget sensitive projects.
- Outperforms Juno VuLite, Halo ML/RL & Lithonia Reality, Elco, Elite, Nora and DMF Retrofit-type LED modules.
- **Energy Star Rated & Title 24 Certified**



► PRODUCT FEATURES

- **LED Style:** Large SOL Lens (Single Optic Lens)
- **LED Brand:** Nichia
- **Wattages/Lumens:** 13W-16W; 550lm – 1200lm
- **Color Temp:** 3000K or 2700K
- **CRI:** 85 CRI
- **Apertures:** 4", 5" & 6"
- **Trim Styles:** 4
- **Dimming:** Incandescent and ELV Standard



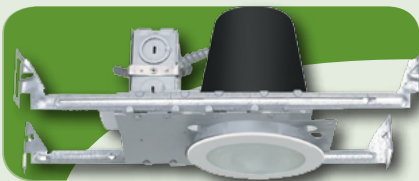
► TRIM PREFIX

- **LRELD**



► HOUSING SUFFIX

- **-LLF-GU24**



Other Great LED Products by LITON



Under Cabinet
Cabinet Bars
Puck light



Safety Lighting



Track Lighting



LinkaLED
LED Bar

LITON[®]
L I G H T I N G

LED Energy Efficient Products



© 2013 LITON Lighting
"The Complete Lighting Solution"
Liton Lighting is a division of
EEMA Lighting Group
5461 West Jefferson Boulevard
Los Angeles, CA 90016
Phone. 1.800.515.4880
Visit us on the web: www.liton.com

EEMA
LIGHTING GROUP

american
lighting
association

IES

ENERGY
STAR
PARTNER