



*Paramour*<sup>™</sup>

FALL 2016

SOPHIA





*new*

# SOPHIA

TEXTURED FLORAL LEAF STRETCH LACE

Mesh: 87% Nylon, 13% Lycra  
Lace: 87% Nylon, 13% Spandex



135021

CONTOUR CUT & SEWN PAD  
32-40 C,D,DD,DDD,G  
MSRP \$39.  
\$17.55



375021

LOGLINE UNLINED  
32-38 C,D,DD,DDD  
MSRP \$48.  
\$21.60



535021

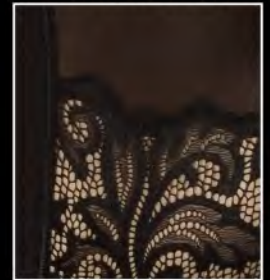
THONG  
S,M,L,XL,XXL  
MSRP \$18.  
\$8.10



715021

BOYLEG  
S,M,L,XL,XXL  
MSRP \$19.  
\$8.55

**BASIC**  
DELIVERY 7/25-8/25



BLACK (BLK)

**BASIC**  
DELIVERY 7/25-8/25



MINK (MNK)

DELIVERY 7/25-8/15



OCEAN DEPTHS (OCD)

- Textured floral stretch lace enhanced with light cording and contrast cups and lining
- Balconnet silhouette with soft foam and hidden wire for modern appeal (Great style for women with shallow top cup)
- Deep plunge longline with contrast mesh lined cups
- Keyhole center gore and wide elastic straps ensure a fabulous fashion basic
- Cut and sewn cup for a more forgiving fit



AMBER





# AMBER

## EYELASH LACE AND TULLE

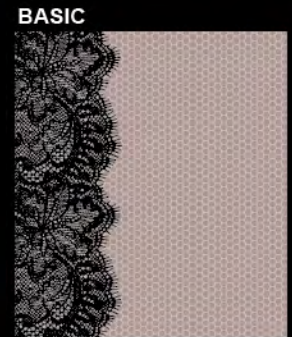
Fabric Content: Tulle:100% Nylon  
 Eyelash Lace: 59% Nylon 41% Polyester  
 Mesh: 88% Nylon 12% Spandex

NOW UP TO  
**H CUP**



BASIC  
 WHITE (WHT)

**115014**  
 UNLINED  
 32-42 C, D, DD, DDD, G, H  
 MSRP \$39.  
 \$17.55



BASIC  
 MOCHA (MCA)



*new*

DELIVERY 11/25-12/15



STONE GRAY (STG)

**635014**  
 BIKINI  
 S, M, L, XL, XXL  
 MSRP \$16.  
 \$7.20

- Classic 3 section cup unlined construction
- Illusion neckline in delicate clean finish tulle with an eyelash lace overlay
- Leotard wing construction
- Coordinate bikini is a classic mid-rise silhouette

CAPTIVATE





# CAPTIVATE

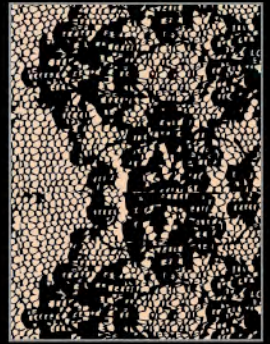
## FLORAL LACE WITH RIBBON LACE TRIM

Point D'esprit: 82% Nylon, 18% Spandex  
Lace: 45% Nylon, 55% Rayon



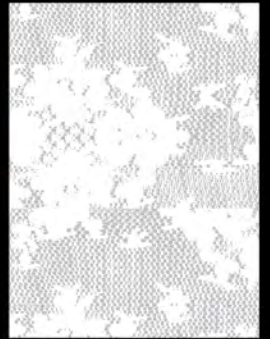
**115005**  
UNLINED  
32-40 C,D,DD,DDD,G  
MSRP \$38.  
\$15.20

BASIC



BLACK (BLK)

BASIC



WHITE (WHT)



**635005**  
BIKINI  
S,M,L,XL,XXL  
MSRP \$16.  
\$6.40

BASIC



SUGAR BABY (SBY)

*new*

DELIVERY 8/25-9/15



GRAPE WINE (GPW)

- Unlined 3 section cup plunge underwire for natural lift and support
- Leotard back will not ride up or slip on body
- Rigid lace overlay combined with bead ribbon details for a uniquely feminine, elegant look.
- 3 column 2 row hook and eye back closure
- Columns and rows increase with size



CAROLINA





# CAROLINA

## GEO FEATHER MOTIF STRETCH LACE

Fabric Content: Micro 77% Nylon, 23% Spandex  
Lace: 84% Nylon, 16% Elastane

NOW UP TO  
H CUP

**115011**

SEAMLESS  
PLUNGE  
CONTOUR  
W/LACE  
T-BACK  
32-42 C,D,DD,  
DDD,G,H  
MSRP \$42.  
\$18.90

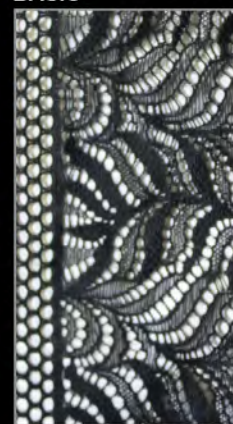


**215011**

UNLINED FULL  
COVERAGE  
PLUNGE  
32-42 C,D,DD,  
DDD,G,H  
MSRP \$39.  
\$15.60



BASIC



**735011**

HIPSTER  
S,M,L,XL,XXL  
MSRP \$18..  
\$7.20



BASIC



SUGAR BABY (SBY)

- Diagonal seamed full coverage plunge underwire
- 3 section inner cup for ultimate shaping and lift
- Flat finish on lace for smooth on body appearance
- Leotard back will not ride up or slip on body
- Plunge contour with high density foam pads for lift and shape

ELLIE





# ELLIE

## VARIAGATED FLORAL EMBROIDERY ON TULLE

Embroidery: 100% Polyester  
Mesh: 87% Nylon, 13% Spandex



**115009**  
UNLINED DEMI  
32-42 C,D,DD,DDD,G,H  
MSRP \$39.  
\$15.60



**675009**  
HI CUT  
S,M,L,XL,XXL  
MSRP \$16.  
\$6.40

- Unlined demi silhouette with vertical upseam for amazing lift and support
- Fine tulle lining for added support
- Leotard back will not ride up or shift on body
- 3 column 2 row hook and eye back closure
- Columns and rows increase with size

**BASIC**



BLACK (BLK)

*new*

DELIVERY 7/25-8/15



DEWBERRY FLORAL (DBF)

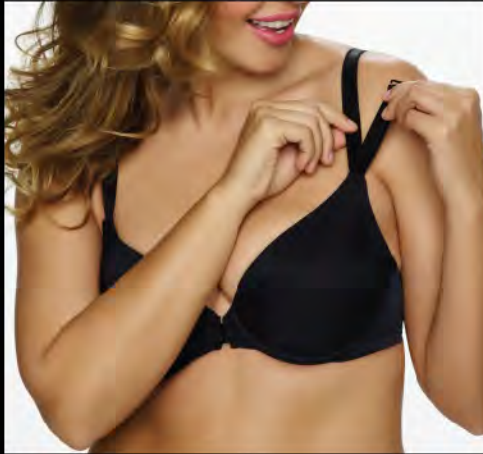
GORGEOUS





# GORGEOUS MICRO WITH LACE TRIM

Fabric Content: 81% Nylon, 19% Spandex  
Lace: 82% Nylon, 18% Elastane



**235455**  
FRONT CLOSE W/ LEOTARD BACK  
32 D,DD,DDD  
34-38 C,D,DD,DDD  
MSRP \$39.  
\$15.60  
Available in Black  
and Warm Nude Only

- Slimming clean finish wing and back with smooth no show construction
- Invisible effect™ front comfort strap adjustment



**255455**  
SEAMLESS CONTOUR  
W/ MEMORY FOAM  
32-42 C,D,DD,DDD,G,H  
MSRP \$39.  
\$15.60  
Available in Black, Mink  
and Bare Only



**735455**  
HIPSTER  
S,M,L,XL,XXL  
MSRP \$16.  
\$6.40  
Available in Black, Mink  
and Bare Only

- Molded hybrid memory foam cups are lightweight and made with a gorgeous sweetheart cut that complements your appearance
- Covered in a micro knit with lace trim detail on the wings for the feminine touch
- Fully adjustable convertible straps make this your go-to undergarment that's flattering with easy comfort
- 3 column 2 row hook and eye back closure
- Columns and rows increase with size

BASIC



BLACK (BLK)

BASIC



MINK (MNK)

BASIC



BARE (BAR)

BASIC



WARM NUDE (WMN)

MADISON





# MADISON

## STRETCH FLORAL LACE

Lace: 58% Nylon, 34% Polyester, 8% Spandex

115946

UNLINED  
FULL  
COVERAGE  
32-42 C,D,  
DD,DDD,G,H  
MSRP \$38.  
\$15.20



BASIC



BLACK CROSSDYE (XBL)

255946

CONTOUR  
T-SHIRT BRA  
32-40 D,DD,  
DDD,G  
MSRP \$39.  
\$15.60

Available in  
Black Crossdye &  
Bare Crossdye Only



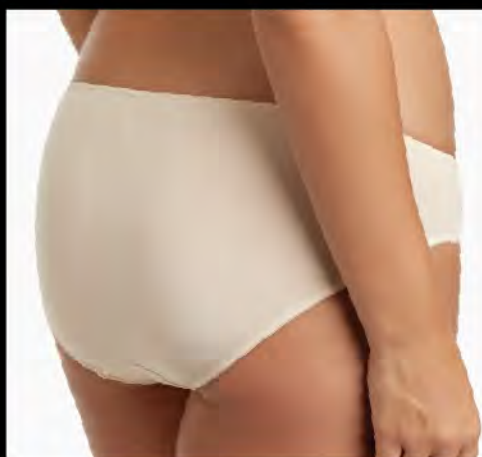
BASIC



BARE CROSSDYE (XBR)

635946

BIKINI  
S,M,L,XL,XXL  
MSRP \$16.  
\$6.40



*new*

DELIVERY 8/25-9/15



GRAPE WINE/  
VIVACIOUS (GWV)

- Two looks defined by luxurious stretch lace
- Unlined horizontal seamed cup for maximum uplift combined with mesh sling and built up strap platform for superior support
- The seamless demi t-shirt bra, in smooth, soft stretch foam with a scalloped lace trim throughout
- 3 column 2 row hook and eye back closure
- Columns and rows increase with size

# STRIPE DELIGHT





# STRIPE DELIGHT

## SHADOW STRIPE WITH LACE TRIM

Fabric Content: 54% Nylon, 16% Spandex

Lace: 91% Nylon, 9% Spandex



**115353**  
UNLINED DEMI  
32-40 C,D,DD,DDD  
MSRP \$38.  
\$15.20



**735353**  
HIPSTER  
S,M,L,XL,XXL  
MSRP \$16.  
\$6.40

- Darted demi bra in a tactile shadow stripe with a swing lace trim
- Inner sling provides youthful uplift
- Rigid Self- fabric front straps with adjustable back straps
- The perfect bra to flatter and fit your fabulous curves
- 3 column 2 row hook and eye back closure
- Columns and rows increase with size

BASIC



BLACK (BLK)

BASIC



FAWN (FWN)

*new*

DELIVERY 9/25-10/15



BLACK/IVORY (BKI)

# SWEET REVENGE





# SWEET REVENGE

## EMBROIDERY WITH DOT MESH

Mesh: 86% Nylon, 14% Spandex  
Embroidery: 67% Nylon, 33% Polyester



**115702**

UNLINED 3 SECTION CUP

Black w/ Ivory Dot, Cheetah and Blue Floral Toile: 32-40 C,D,DD,DDD,G

Bare w/ Ivory Dot: 34-36 C, 32-38 D,34-38 DD,DDD

MSRP \$38.

\$15.20



**735702**

HIPSTER

S,M,L,XL,XXL

MSRP \$16.

\$6.40

- Unlined 3 section cup plunge underwire for natural lift and support
- Leotard back will not ride up or slip on body
- Stretch mesh cups are lined with a fine denier for additional support and shaping
- Printed mesh combined with a petite embroidery for youthful fresh look
- 3 column 2 row hook and eye back closure
- Columns and rows increase with size

**BASIC**



BARE W/ IVORY DOT (BID)

**BASIC**



BLACK W/ IVORY DOT (BXI)

**BASIC**



CHEETAH (CTH)

*new*

DELIVERY 10/25-11/15



BLUE TOILE FLORAL (BFT)

VIVIEN





# VIVIEN

## MICRO WITH LACE GALLOON & TRIM

Fabric Content: 77% Micro Nylon, 23% Spandex

Lace: 85% Nylon, 5% Viscose, 10% Spandex

Lace Trim: 93% Nylon, 7% Spandex

*new*

DELIVERY 9/25-10/15

**375008**  
**LOGLINE**  
**KEYHOLE**  
**BALCONETTE**  
 32-38 C,D,DD  
 32-36 DDD  
 MSRP \$45.  
 \$20.25  
 Available in  
 Black and  
 Sugar Baby  
 Only

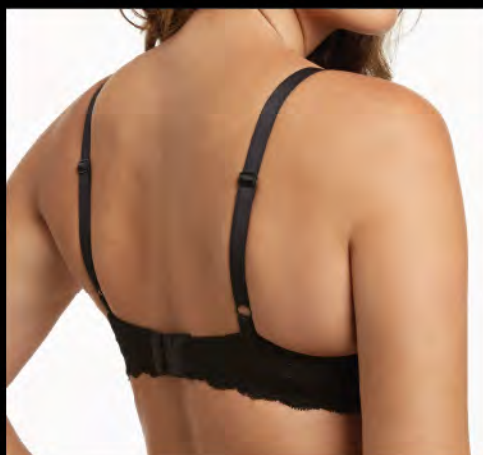


**BASIC**



**BLACK (BLK)**

**135008**  
**PLUNGE**  
**CONTOUR**  
 32-38 C  
 32-40 D,DD,  
 DDD  
 MSRP \$39.  
 \$15.60

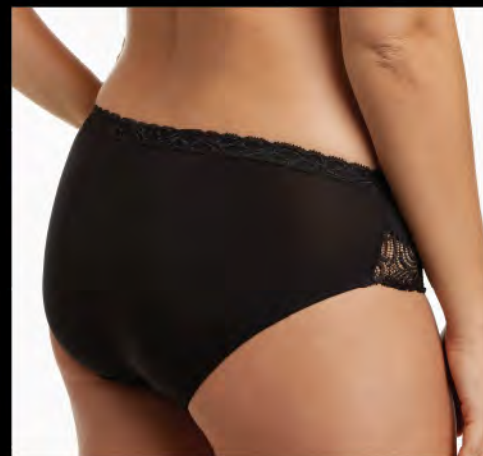


**BASIC**



**SUGAR BABY (SBY)**

**735008**  
**HIPSTER**  
 S,M,L,XL,XXL  
 MSRP \$16.  
 \$6.40



*new*

DELIVERY 9/25-10/15



**TANGO RED (TGR)**

- Silky stretch micro and lace combination
- Seamless lined contour cups in a deep plunge silhouette with lace wings and trim details for a sexy contemporary everyday bra
- Longline features seamless demi contour pads with boning throughout bodice for an amazing fit



# AMOURETTE





# AMOURETTE

## PIN TUCK LACE

Lace: 78% Nylon, 15% Spandex, 7% Polyester



**115056**  
UNLINED SEMI DEMI  
32-38 C,D,DD  
MSRP \$36.  
\$14.40

BASIC



BLACK (BLK)

BASIC



IVORY (IVR)



**635056**  
HI CUT  
S,M,L,XL,XXL  
MSRP \$16.  
\$6.40

- Vertical seamed demi unlined bra in an intricately detailed stretch lace
- Leotard back will not ride up or slip on body
- Rigid front straps in satin and lace combine ultimate comfort and luxury for chic styling of one of our signature looks
- 3 column 2 row hook and eye back closure
- Columns and rows increase with size

# DECADENT





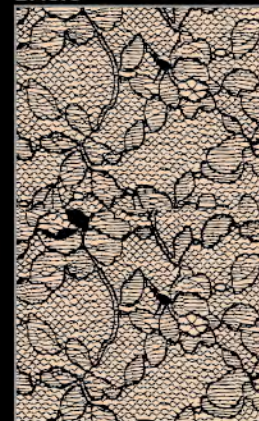
# DECADENT

DELICATE FLORAL LACE  
WITH SATIN RUFFLE TRIM

Lace: 100% Nylon



BASIC



BLACK (BLK)

**115004**  
UNLINED SEMI DEMI  
32-38 C,D,DD,DDD  
MSRP \$38.  
\$15.20

BASIC



IVORY (IVR)



**735004**  
HIPSTER  
S,M,L,XL,XXL  
MSRP \$16.  
\$6.40

- Vertical seamed demi unlined bra in an all-over rigid lace overlay with satin details and illusion “window” enhances this sexy and supportive elegant silhouette
- 3 column 2 row hook and eye back closure
- Columns and rows increase with size

**TERMS AND CONDITIONS**

A statement of policy by PIEGE CO., INC. for the guidance of customers.

**TERMS OF PAYMENT:**

8%/10 EOM or Net 30. The 8% discount is for an on time payment and is not a trade discount. Please adjust your terms to allow on time payment.

Delinquent account balances are subject to a late payment charge of 1.5% per month, or any part thereof, on the outstanding balance. PIEGE CO., INC., within its sole discretion, may withhold delivery of new orders in the event of non-compliance with the above terms of payment.

**ORDER CANCELLATION:**

Customer order cancellation must be received by PIEGE CO., INC. in writing in order for such cancellation to be effective. If, for any reason whatsoever, Customer order cancellation occurs subsequent to shipment by PIEGE CO., INC. customer will be responsible for any and all freight cost. In such event, the merchandise must be returned and received by PIEGE CO., INC. in the original, unbroken shipping carton and a 15% restocking fee will apply. Also, any refused shipment will be subject to a \$25 handling fee.

- If for any reason there are any exceptions, revisions or changes to the customer's purchase order, PIEGE CO., INC. will contact the buyer for approval prior to shipment. The said approval must be received via fax or e-mail.
- PIEGE CO., INC. will accept cancellations for BASIC MERCHANDISE providing the written notice is received ten (10) days prior to start ship date. PIEGE CO., INC. will not accept cancellations for FASHION MERCHANDISE.

**EXAMINATION OF MERCHANDISE:**

Upon receipt, it is the responsibility of Buyer to inspect that all merchandise delivered matches its order. The Buyer must make any claims of defects, including but not limited to those related to shortages, quality, or specification, within five (5) days after the receipt of merchandise.

Any claim for shortage or damage must be made by customer, in writing to: PIEGE CO., INC., Attn. Customer Service, 20120 Plummer St., Chatsworth, CA 91311.

**RETURN POLICY:**

Important – All claims must be made, in writing, within five (5) days of receipt of merchandise. It is the responsibility of Buyer to inspect upon receipt, that all merchandise delivered matches its order. No merchandise is sold on a guaranteed sale basis, or with privilege of return. No merchandise may be returned without a return authorization number. A request must be made for such authorization number in writing to: PIEGE CO., INC., Attn. Customer Service, 20120 Plummer St., Chatsworth, CA 91311. All merchandise must be returned in its original shipping condition. Merchandise returned without prior authorization will be refused at Buyer's expense. The Seller will charge Buyer a 15% rehandling charge for any returned merchandise. Merchandise returned which does not conform either in quantity or in styles/sizes/colors to the return authorization will be returned to the buyer at buyer's expense.

**MINIMUM ORDER:**

PIEGE CO., INC. has the following order requirements.

- Felina: Initial order \$500, re-order \$200.
- Unveiled: Initial order \$500, re-order \$200.
- Paramour: Initial order \$500, re-order \$200.
- Jezebel : Initial order \$400, re-order \$200.

Orders cannot be combined within the different lines so as to meet minimum requirements. A surcharge of \$25 will be added to any re-order less than the said re-order requirements.

**SHIP WINDOW :**

For basic merchandise, re-order is five (5) to seven (7) working days from the day that the order is received.

**COD'S:**

Upon completion of the packing of a COD order, the buyer will be provided with shipping information. All COD orders must ship out of the PIEGE CO., INC. warehouse within five (5) working days after the merchandise is packed. Cancellation of packed COD orders will be subject to \$25 re-stocking fee.

- If the order is received past the cancellation date, it must be approved by the customer prior to shipping.
- If the COD order is refused, the customer will be contacted in order to finalize the procedure. The customer will be charged for all shipping expenses incurred.
- If the customer accepts the order, the customer will be responsible for the shipping cost of the returned package (payment must be received prior to re-shipping).
- If the customer refuses the order, a \$25 return fee will be incurred. Additional orders will only be accepted once the return fee is satisfied.

**NEW ACCOUNTS:**

New customer credit must be established to the satisfaction of **PIEGE CO., INC.** within its sole discretion. Until such time as **PIEGE CO., INC.**, and/or its factor; have approved the Customer's credit worthiness, Customer payment for any and all orders placed must be received prior to delivery by **PIEGE CO., INC.** A 25% deposit is required for all new accounts paying COD.

**SHIPPING CHARGES:**

All orders will be shipped F.O.B. Chatsworth, CA. Customer is responsible to pay all shipping charges.

**AGREEMENT AND ACKNOWLEDGEMENT:**

Buyer(s) have carefully read and agree to these Terms and Conditions. Buyer authorizes PIEGE CO., INC. to verify the credit of the Company and/or the individual(s) whose signature(s) appears on this or the other documents specified above. Buyer and guarantor(s) authorize its bank(s) and/or business references to release credit information of Buyer and/or Guarantor(s) as requested by PIEGE CO., INC.







*Paramour*<sup>™</sup>

**CORPORATE OFFICE**  
20120 PLUMMER STREET  
CHATSWORTH, CA 91311-5448  
PHONE 818.727.9100  
FAX 818.727.0059

**NEW YORK OFFICE**  
12 WEST 32ND STREET, 4TH FLOOR  
NEW YORK, NY 10001  
PHONE 212.683.9205  
FAX 212.213.6959

[WWW.PARAMOURUSA.COM](http://WWW.PARAMOURUSA.COM)