

# LITON<sup>®</sup>

L I G H T I N G



LED LIGHTING

# Quick Select Instruction Guide

## What is Spec ID Search?

Have you ever wished that there was a quick way to find a single LED product from the hundreds of LED products on the LITON website? So did we!

Liton has created this special Spec ID Search Tool for that purpose. It's very easy to use.

## It's as easy to use as 1 - 2 - 3

### Step 1



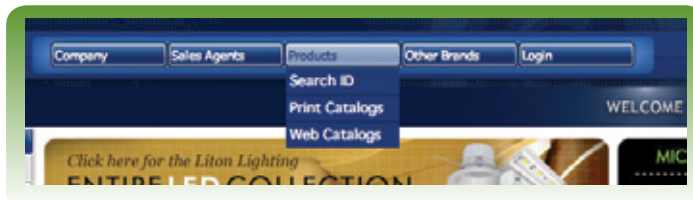
**LENSED REFLECTOR**  
LRELD400  
Spec ID# 2515



**REFLECTOR, FLAT LENS**  
LRELD402  
Spec ID# 2482

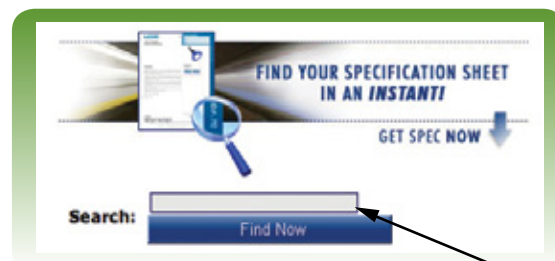
Note the **Spec ID#** from the item you want from the Quick Select Guide

### Step 2

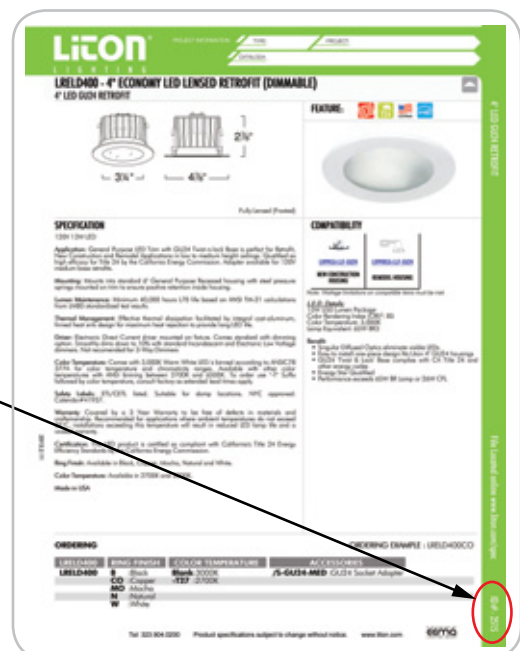


Select **Search ID#** from the drop down box.

### Step 3



Enter the **Spec ID#** from the guide into the box and click Find Now.



# LITON Lighting LED

As an emerging leader in LED lighting, Liton is at the forefront of application driven design. Innovative LED technology combined with familiar form factors allows LITON's LED portfolio to cover virtually every indoor application and budget.

It is that wealth of LED product choices that can make it time consuming to sort among the hundreds of LITON LED products to find the item that you are looking for.

We have created the LITON LED Quick Selection Guide to help you quickly find the product you are looking for by using our handy Search ID feature. The previous page gives you 1-2-3 instructions for how to use this unique tool.



Architectural LED Downlights

Page 4 - 5



MiniArc LED Downlights

Page 6



General Purpose LED Downlights

Page 7 - 9



GU24 LED Downlights

Page 10



LED Track Heads

Page 11



LinkaLED 12V Tape Light

Page 12



LinkaLED 24V

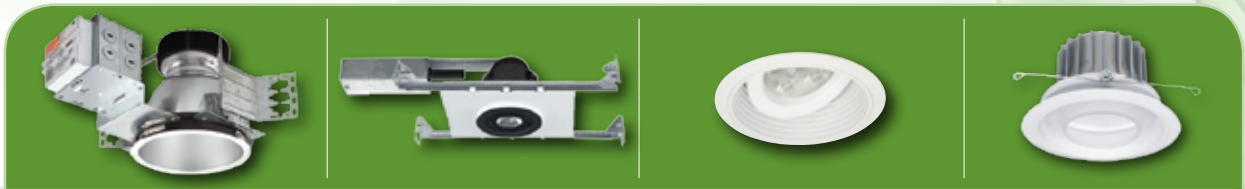
Page 13



LED Cabinet and Display Lighting

Page 14

# LITON LED Downlight Comparison



	Architectural	Mini Arc	General Purpose	Economy (GU24)
<b>LED STYLE</b>	SÖL LENS (Single Optical Lens)	SÖL LENS (Single Optical Lens)	3, 6 or 9 LED Array	LARGE SÖL LENS (Single Optical Lens)
<b>LED Brand</b>	Bridgelux	Bridgelux	Edison-Opto	Nichia
<b>Applications</b>	Commerical and Spec Grade	High-End Residential and Commercial	Residential and Light Commercial	Economy Residential, Low Budget Light Commercial
<b>Main Benefits</b>	Deeply recessed LED provides 50° glare cut-off. Highly accurate color temperature, High CRI Option, UniDim and other dimming options, Available for new construction, remodel and retrofit applications.	MR16 size LED fixture outperforms 50W MR16 lamps and saves over 70% energy. CCT, High CRI and Dimming options, Die-Cast Aluminum trims in designer finishes are perfect for high-end residential applications	More options than any comparable product including: Sizes, Trim Styles, Trim Colors, Beam Spreads, Input, CCT and CRI options, Housing types, Dimming choices, more control over the lit environment.	Affordable, compares to similar product in price and performance. Available for New Construction, Remodel and Retrofit. GU24 Base conforms to Title 24 and energy rebate requirements.
<b>Available Sizes</b>	4", 6" and 8"	2", 3", 4"	2", 3", 4", 5", 6"	4", 5" & 6"
<b>Available Wattages</b>	14W, 19W, 25W, 40W	12W	2": 4W/6W 3": 4W/6W/8W 4", 5", & 6": 10W/15W 6": 16W	10W/15W
<b>Lumen Packages</b>	900Lm - 3400Lm	540Lm - 660Lm	180Lm - 1200Lm	450 Lm - 650Lm
<b>Beam Spreads</b>	30° and 50°	25° and 40° and Assymetrical	8°, 25°, 45°, 60°,120°	120°
<b>Voltages</b>	120V-277V, 347V	120V, 120V-277V	120V, 120V-277V	120V Only
<b>Dimming Options</b>	UniDim, 0-10V, ELV, Incandescent	DIN/ELV and DHL	0-10V, ELV, Incandescent	ELV/Incandescent
<b>Emergency Back Up?</b>	Yes	Yes	Yes	No
<b>Remodel Available?</b>	Yes	Yes, 2" & 3" only	Yes	Yes
<b>Retrofits?</b>	Yes, Architectural Frame-in Kits	No	Yes, Residential Housings	Yes, Residential Housings
<b>Warranty</b>	5 years	5 years	3 years	3 years
<b>Energy Star</b>	Yes, 25W only	Pending	No	Yes
<b>IC</b>	No	No	Yes	Yes
<b>Title 24 Compliant</b>	Yes	Yes	Yes	Yes
<b>Price Level</b>	\$\$\$	\$\$\$	\$\$	\$



# Architectural LED Downlight Quick Selection Guide

## 4" Architectural LED Frame-In Kit (19W/25W)



**NEW CONSTRUCTION FRAME-IN**  
LHALD425  
Spec ID# 2590

### Architectural LED Downlight Features

- For Commercial & Architectural
- Illuminates like PAR & Quartz Lamps
- Large Single Optic Lens
- Lumen Packages: 19W/1400Lm, 25W/2000Lm, 40W/3400Lm
- Kelvin Temp: 3000K Others optional
- CRI: 80, 90+ CRI Option
- Dimming Options: 0-10V, ELV, Incandescent, UniDim™

## 4" Architectural LED Trim (1400Lm/2000Lm)



**LED REFLECTOR TRIM**  
(1400Lm/2000Lm)  
LRALD4  
Spec ID# 2592

## 6" Architectural LED Frame-In Kit (19W/25W)



**NEW CONSTRUCTION FRAME-IN**  
LHALD625  
Spec ID# 2556



**REMODEL FRAME-IN**  
LHALD6R25  
Spec ID# 2566

## 6" Architectural LED Trim (1400Lm/2000Lm)

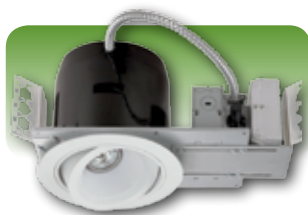


**REFLECTOR TRIM**  
(1400Lm/2000Lm  
3400Lm)  
LRALD6  
Spec ID# 2588



**DECO LENS REFLECTOR**  
(1400Lm/2000Lm)  
LRALD6021  
Spec ID# 2582

## 6" Architectural Adjustable LED Frame-In Kit (19W/25W)



**NEW CONSTRUCTION ADJUSTABLE FRAME-IN**  
LHBLD625C070UE/LR6L88  
Spec ID# 2527

## 6" Architectural LED Frame-In Kit (40W/2400Lm)



**NEW CONSTRUCTION FRAME-IN**  
LHALD640  
Spec ID# 2586

## 6" Architectural Wall Wash LED Trim (1400Lm/2000Lm)



**NEW CONSTRUCTION WALL WASH**  
LHALD625/LRALD671  
Spec ID# 2589

## 6" Architectural LED Frame-In Kit (40W/2400Lm)



**REMODEL FRAME-IN**  
LHALD6R40  
Spec ID# 2587

# Architectural LED Downlight Quick Selection Guide

## 6" Architectural Remote Phosphor LED Frame-In Kit (20W/36W)



**NEW CONSTRUCTION  
FRAME-IN**  
LHFLD636  
Spec ID# 2419

### Architectural Remote Phosphor LED

- Philips Fortimo™ Remote Phosphor LED Module
- Consistent lumen output across all Color temps
- No visible LEDs, 50° glare cutoff
- Advance Xitanium(tm) 0-10V dimming option

## 8" Architectural LED Frame-In Kit (19W/25W)



**NEW CONSTRUCTION**  
LHBLD825C070UE  
Spec ID#

## 8" Architectural LED Trim (1400Lm/2000Lm)



**REFLECTOR TRIM**  
(1400Lm/2000Lm)  
LRALD8  
Spec ID# 2593

# Architectural LED Retrofit Downlight Quick Selection Guide

## 6", 8", 10" LED Retrofit Trims (25W/2000Lm)



**6" RETROFIT REFLECTOR TRIM**  
(25W/2000Lm)  
LRALD6XXX-R25UE  
Spec ID# 2387



**8" RETROFIT REFLECTOR TRIM**  
(25W/2000Lm)  
LRALD8XXX-R25UE  
Spec ID# 2388



**10" RETROFIT REFLECTOR TRIM**  
(25W/2000Lm)  
LRALD9XXX-R25UE  
Spec ID# 2475

**Cutout Diameter**  
LRALD6: 6 3/4"  
LRALD8: 8 1/8"  
LRALD9: 9 5/8"

### Retrofit LED Downlight Features

- Easily convert 120V, HID or CFL Downlights to LED
- Illuminates like A, R, & CFL Lamps
- Large Single Optic Lens
- Lumen Packages: 19W/1400Lm, 25W/2000Lm
- Kelvin Temp: 3000K, Others optional
- CRI: 80, 90+ CRI Option
- Dimming Options: 0-10V, ELV, Incandescent, UniDim™

## 6" Shallow Adjustable LED Retrofit Trim (16W/1200Lm)



**SHALLOW LED RETROFIT TRIM**  
(1200Lm)  
LRCLD678  
Spec ID# 2558

### Shallow Retrofit LED Downlight Features

- For shallow plenums and adjustable applications
- Easily convert 120V, HID or CFL Downlights to LED
- Illuminates like A, R, & CFL Lamps
- Large Single Optic Lens
- Lumen Packages: 16W/1200Lm
- Kelvin Temp: 3000K, Others optional
- CRI: 80CRI
- Dimming Option: 0-10V

# MiniArc LED Downlight Quick Selection Guide

## 2" MiniArc LED Housing (12W)



**NEW CONSTRUCTION  
REMODEL**  
LHBLD212C35  
Spec ID# 2494

### MiniArc LED Downlight Features

- Generous Assortment of Trim Styles, Finishes, Dimming and Input Options.
- Illuminates like MR16 style lamps
- Apertures: 2", 3" & 4"
- Lumen Packages: 12W, 650 Lm
- Kelvin Temp: 3000K, others optional  
CRI: 80+, High 90CRI Option

## 2" MiniArc LED Trim (1 LED)



**PINHOLE**  
LR2LH19  
Spec ID# 2495

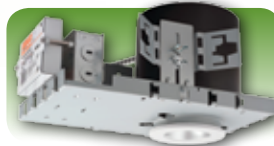


**REFLECTOR**  
LR2LH21  
Spec ID# 2493



**LENSED REFLECTOR  
WALL WASH**  
LR2LH71  
Spec ID# 2514

## 3" MiniArc LED Housing (12W)



**NEW CONSTRUCTION**  
LHJLD312C35  
Spec ID# 2628



**REMODEL**  
LHBLD3R12C35  
Spec ID# 2629

## 3" Mini Arch LED Trim (1 LED)



**REFLECTOR**  
LR3LH21  
Spec ID# 2630



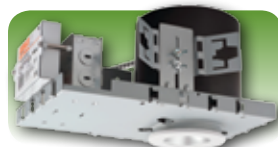
**WALL WASH**  
LR3LH71  
Spec ID# 2632

## 3" Mini Arch Adjustable LED Trim (1 LED)



**ADJUSTABLE GIMBAL**  
LR3LH88  
Spec ID# 2631

## 4" MiniArc LED Housing (12W)



**NEW CONSTRUCTION**  
LHJLD412C35  
Spec ID# 2633

## 4" Mini Arch LED Trim (1 LED)



**REFLECTOR**  
LR4LH21  
Spec ID# 2634



**ADJUSTABLE WALL WASH**  
LR4LH71  
Spec ID# 2635



# General Purpose LED Downlight Quick Selection Guide

## 2" General Purpose LED Housing (4W - 6W)



**NEW CONSTRUCTION**  
LHLH204C35 - 4W  
LHLD206C50 - 6W  
Spec ID# 2091



**REMODEL**  
LHLH2R04C35 - 4W  
LHLD2R06C50 - 6W  
Spec ID# 2092

### General Purpose LED Downlight Features

- A Vast Selection of Apertures, Lumen Packages, Trim Styles, Finishes, Dimming and Input Options.
- Illuminates like A, MR, R, & CFL Lamps
- Apertures from 2" to 6"
- Lumen Packages: 4W/125Lm - 16W/1200Lm
- Beam Spread Options: 8°, 12°, 25°, 45°, 60° & 120° (SOL)
- Kelvin Temp: 3000K, others optional
- CRI: 80+

## 2" General Purpose LED Trim (3 LED)



**REFLECTOR**  
LRLD221  
Spec ID# 2093



**BAFFLE**  
LRLD293  
Spec ID# 2095



**WET LOCATION, LENSED REFLECTOR**  
LRLD222 Spec ID# 2094

## 3" General Purpose LED Housing (4W, 6W, 8W)



**NEW CONSTRUCTION**  
LHLD304C35 - 4W  
LHLD306C50 - 6W  
LHLD308C70 - 8W  
Spec ID# 2299

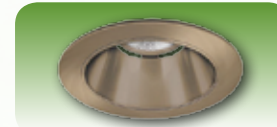


**REMODEL**  
LHLD3R04C35 - 4W  
LHLD3R06C50 - 6W  
LHLD3R08C70 - 8W  
Spec ID# 2298

## 3" General Purpose LED Trim (3 LED)



**SQUARE PINHOLE BAFFLE**  
LRLD319SQ  
Spec ID# 2297



**MICRO-CAST REFLECTOR**  
LRLD321  
Spec ID# 2294

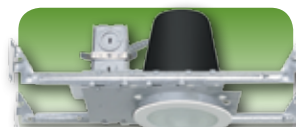


**MICRO-CAST PINHOLE**  
LRLD319  
Spec ID# 2296



**MICRO-CAST BAFFLE**  
LRLD393  
Spec ID# 2295

## 4" General Purpose LED Housing (10W)



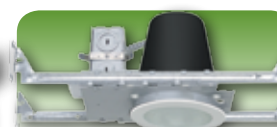
**NEW CONSTRUCTION**  
LHLD41C  
Spec ID# 2097



**REMODEL**  
LHLD41C  
Spec ID# 2254



**SHALLOW**  
LSHLD4  
Spec ID# 2132



**NEW CONSTRUCTION**  
LHLD410  
Spec ID# 2096



**REMODEL**  
LHLD410  
Spec ID# 2098

## 4" General Purpose LED Trim (6 LED)



**DEEP LED REFLECTOR**  
LRLD421  
Spec ID# 2127



**LED WALL WASH REFLECTOR**  
LRLD471  
Spec ID# 2278



**LED LOW PROFILE**  
LRLD400  
Spec ID# 2465



**LED BASIC REFLECTOR**  
LRLD402  
Spec ID# 2464



**LED BAFFLE**  
LRLD493  
Spec ID# 2152



**LED LENSED SHOWER**  
LRLD401  
Spec ID# 2139



**LED DECO TRIM**  
LRLD442  
Spec ID# 2203



# General Purpose LED Downlight Quick Selection Guide

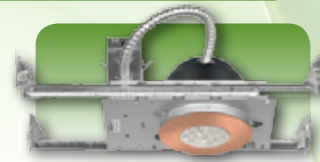
## 4" High Output General Purpose LED Housing (14W)



**NEW CONSTRUCTION**  
LRLDH4  
Spec ID# 2504



**REMODEL**  
LRLDH4R  
Spec ID# 2505



**SHALLOW**  
LSLHDH4  
Spec ID# 2511

## 4" High Output General Purpose LED Trim (9 LED)



**LED LOW PROFILE**  
LRLDH400  
Spec ID# 2509



**LED BASIC REFLECTOR**  
LRLDH402  
Spec ID# 2510



**DEEP LED REFLECTOR**  
LRLDH421  
Spec ID# 2506



**LED WALL WASH REFLECTOR**  
LRLDH471  
Spec ID# 2507



**LED BAFFLE**  
LRLDH493  
Spec ID# 2508



**LED LENSED SHOWER**  
LRLDH401  
Spec ID# 2568



**LED ADJUSTABLE GIMBAL**  
LRLDH487  
Spec ID# 2535

## 5" General Purpose LED Mounting Method (10W)



**NEW CONSTRUCTION**  
LRLD510C50  
Spec ID# 2117



**REMODEL**  
LRLD5R10C50  
Spec ID# 2133



**DEEP LED REFLECTOR**  
LRLD521  
Spec ID# 2118



**ADJUSTABLE REGRESSED LED GIMBAL**  
LRLD578  
Spec ID# 2119



**ADJUSTABLE LED GIMBAL**  
LRLD588  
Spec ID# 2120

## 5" High-Output General Purpose LED Mounting Method (14W/16W)



**NEW CONSTRUCTION**  
LRLDH516  
Spec ID# 2575



**REMODEL**  
LRLDH5R16  
Spec ID# 2574



**RETROFIT KIT**  
LKL16V120

## 5" High Output General Purpose LED Trim (9 LED)



**LED REFLECTOR, 14W**  
LRLDH502  
Spec ID# 2578



**LED ADJUSTABLE REGRESSED GIMBAL, 14W**  
LRLDH578  
Spec ID# 2577



**LED ADJUSTABLE GIMBAL, 14W**  
LRLDH588  
Spec ID# 2576

## 5" High Output General Purpose LED Trim (1 LED)



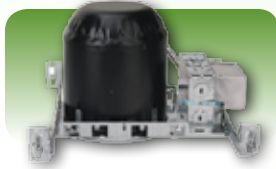
**LED REFLECTOR, 16W**  
LRLDH521  
Spec ID# 2572



**LED BAFFLE, 16W**  
LRLDH593  
Spec ID# 2573

# General Purpose LED Downlight Quick Selection Guide

## 6" General Purpose LED Mounting Method (10W, 15W)



**NEW CONSTRUCTION**  
LHL6D  
Spec ID# 2104



**REMODEL**  
LHL6R  
Spec ID# 2103



**NEW CONSTRUCTION SHALLOW**  
LSHL6D  
Spec ID# 2150



**REMODEL**  
LSHL6R  
Spec ID# 2151

## 6" General Purpose LED Trim (6 LED)



**OPEN HEAT SINK LED GIMBAL**  
LRL677  
Spec ID# 2106



**ADJUSTABLE LED GIMBAL**  
LRL678  
Spec ID# 2105



**DECO FROST LED DOME**  
LRL642  
Spec ID# 2135



**REGRESSED DECO CONE LED**  
LRL649  
Spec ID# 2136



**LED WALL WASH**  
LRL671  
Spec ID# 2300

## 6" High Output General Purpose LED Mounting Method (16W)



**NEW CONSTRUCTION SHALLOW**  
LHL6H  
Spec ID# 2463



**REMODEL**  
LHL6HR  
Spec ID# 2462



**RETROFIT KIT**  
LKL16V120  
Spec ID#

## 6" High Output General Purpose LED Trim (1 LED)



**DEEP LED 1200Lm REFLECTOR**  
LRL6H21  
Spec ID# 2459



**LED 1200Lm WALL WASH**  
LRL6H71  
Spec ID# 2460



**ADJUSTABLE LED 1200Lm GIMBAL**  
LRL6H78  
Spec ID# 2461

# GU24 LED Downlight Quick Selection Guide

## 4" GU24 Mounting Method



**NEW CONSTRUCTION**  
LH991CA-LLF-GU24  
Spec ID# 2410



**REMODEL**  
LH99RICA-LLF-GU24  
Spec ID# 2413



**GU24 ADAPTER**  
S/GU24-MED

### GU24 LED Downlight Features

- Budget friendly
- Illuminates like A, R & CFL Lamps
- Large Single Optical Lens
- Lumen Packages: 13W/550Lm – 16W/1200Lm
- Kelvin Temp: 3000K or 2700K
- CRI: 85+

## 4" GU24 LED Trim



**LENSED REFLECTOR**  
LRELD400  
Spec ID# 2515



**REFLECTOR, FLAT LENS**  
LRELD402  
Spec ID# 2482



**REFLECTOR, DOME LENS**  
LRELD442  
Spec ID# 2481



**BAFFLE, FLAT LENS**  
LRELD403  
Spec ID# 2564

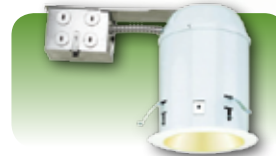


**BAFFLE, DOME LENS**  
LRELD443  
Spec ID# 2563

## 5" GU24 Mounting Method



**NEW CONSTRUCTION**  
LH51CA-LLF-GU24  
Spec ID# 2411



**REMODEL**  
LH51RICA-LLF-GU24  
Spec ID# 2414



**GU24 ADAPTER**  
S/GU24-MED

## 5" GU24 LED Trim



**REFLECTOR FLAT LENS**  
LRELD502  
Spec ID# 2484



**REFLECTOR DOME LENS**  
LRELD542  
Spec ID# 2487

## 6" GU24 Mounting Method



**NEW CONSTRUCTION**  
LH71CA-LLF-GU24  
Spec ID# 2412



**REMODEL**  
LH71RICA-LLF-GU24  
Spec ID# 2415



**GU24 ADAPTER**  
S/GU24-MED

## 6" GU24 LED Trim



**REFLECTOR FLAT LENS**  
LRELD602  
Spec ID# 2469



**BAFFLE**  
LRELD603  
Spec ID# 2470



**DECO CONE**  
LRELD649  
Spec ID# 2471



**LED DOME**  
LRELD642  
Spec ID# 2477



# LED Track Head Quick Selection Guide

## EcoTrack Economy LED Track Heads

### EcoTrack LED Features

- For Budget Sensitive Applications
- Illuminates like PAR & CFL Lamps
- Lumen Packages: 10W/450Lm, 15W/650Lm, 25W/1500Lm, 25W/2500Lm
- Kelvin Temp: 3000K, Others optional
- CRI: 80+
- Dimming Options: ELV



**EcoTrack 10W/15W LED**  
LTD5010  
LTD5015  
Spec ID# 2230



**EcoTrack 16W 1200 LUMEN EcoTrack LED**  
LTD5016  
Spec ID# 2479



**EcoTrack 2500 LUMEN EcoTrack LED**  
LTD5025  
Spec ID# 2583



**EcoTrack LINEAR LED WALL WASH (1500 Lumen)**  
LTD5125  
Spec ID# 2581

## Aztec 16/20 LED Track Heads

### Aztec 16/20 LED Die-cast Track Heads

- Die-Cast Aluminum Construction
- For Commercial, Architectural & High-end Residential
- Illuminates like MR, PAR & Quartz Lamps
- Large Single Optic Lens
- Lumen Packages: 9W/420Lm, 10W/420Lm, 20W/940Lm
- Kelvin Temp: 3000K, Others optional
- CRI: 80+
- Dimming Options: ELV



**DIE-CAST AZTEC 16 ECONOMY TRACK HEAD**  
LTD7109  
Spec ID# 2606



**DIE-CAST AZTEC 16 TRACK HEAD**  
LTD7210  
Spec ID# 2567



**DIE-CAST AZTEC 20 TRACK HEAD**  
LTD7220  
Spec ID# 2569

## Studio LED Track Heads

### Studio LED Features

- Plug & Play design allows instant retrofit of older track systems to LED
- Illuminates like PAR & R Type Lamps
- Lumen Packages: 10W/450Lm, 14W/650Lm,
- Kelvin Temp: 3000K, Others optional
- CRI: 80+
- Dimming Options: ELV



**10W CONCEALED LED TRACK HEAD**  
LTD8010  
Spec ID# 2110



**14W CONCEALED LED TRACK HEAD**  
LTD8014  
Spec ID# 2528

# LinkaLED 12V Tape Light Quick Selection

## LinkaLED LED 12V Tape Light



**LinkaLED 12" STRIP (12V)**  
LUTKLED1-27  
LUTKLED1-30  
LUTKLED1-40  
Spec ID# 2285



**LinkaLED L STRIP (12V)**  
LUTKLEDL-27  
LUTKLEDL-30  
LUTKLEDL-40  
Spec ID# 2286



**LinkaLED 120" STRIP (12V)**  
LUTKLED1-27  
Spec ID# 2285



**LinkaLED T STRIP (12V)**  
LUTKLEDT-27  
LUTKLEDT-30  
LUTKLEDT-40  
Spec ID# 2287



**LinkaLED X STRIP (12V)**  
LUTKLEDX-27  
LUTKLEDX-30  
LUTKLEDX-40  
Spec ID# 2288

## LinkaLED LED 12V Tape Accessories

### LinkaLED Accessory Features

- Easy wiring using 4-pin connectors



**LinkaLED 4-STEP-IN-LINE DIMMER SWITCH**  
LUTKLED-DM50  
Spec ID# 2467



**LinkaLED 1 INTO 3 POWER CONNECTOR**  
LULED-PC3  
Spec ID# 2549



**LinkaLED POWER INTERCONNECT**  
LUTKLED-PC04  
LUTKLED-PC16  
Spec ID# 2290



**LinkaLED 3-WAY INTER-CONNECTOR**  
LULEDB-T-4  
Spec ID# 2550



**LinkaLED END FEED CONNECTOR**  
LUTKLED-PH40  
Spec ID# 2289

## LinkaLED 12V Tape Power Supplies

### LinkaLED 12V Tape Light Features

- Flexible, Modular Tape Lighting system.
- No dark spots
- Inline power feeds allow seamless runs.
- Protective Silicone Cover
- 3M brand Self Adhesive
- L, T & X Tape Shapes allow unique geometric designs with uninterrupted, dark spot free illumination



**LinkaLED TAPE PLUG-IN DRIVER (12V)**  
LUTKLED-12V12  
LUTKLED-36V12  
Spec ID# 2468



**12V/60W DIMMABLE DRIVER**  
LD522V012-60  
LD522V012-60-PI  
Spec ID# 2292



**12V/100W DIMMABLE DRIVER**  
LH522V012-100  
Spec ID# 2320



**12V/10W HARD WARE DRIVER**  
LD529V012-10  
Spec ID# 2595



**12V/60W DRIVER (NON-DIMMING)**  
LD533V012-60  
LD533V012-60-PI  
Spec ID# 2466

# LinkaLED 24V Quick Selection Guide

## LinkaLED LED Puck

### LinkaLED Puck Light Features

- Easy wiring in parallel or using 4-pin connectors
- Dimmable w/Magnetic Low Voltage Dimmer
- Singular Optic Lens for even illumination with no visible LED
- Up to 30 pucks per run, 80 per single driver.



**LinkaLED PUCK LIGHT  
(Recessed)**  
LK136LED  
Spec ID# 2441



**LinkaLED PUCK LIGHT  
(Surface Mount)**  
LK136SLED  
Spec ID# 2442

## LinkaLED LED Bar

### LinkaLED Bar Light Features

- No dark spots with in-line connectors
- Seamless runs with inline power feeds
- Modular – no soldering or flimsy connections
- Optional 30° Mounting Clip
- Optional plastic covers



**LinkaLED Bar**  
LULEDB04  
LULEDB12  
LULEDB24  
LULEDB48  
Spec ID# 2324



**LinkaLED BAR COVER**  
LULEDB-CC48  
LULEDB-FC48  
Spec ID#2348



**LinkaLED BAR MOUNTING CLIPS**  
LULEDB-BR00  
LULEDB-BR30  
Spec ID#2328

## LinkaLED LED 24V Tape Light

### LinkaLED 24V Tape Light Features

- Flexible, modular tape light system
- Magnetic Low Voltage Dimmer, 0-10V dimming options
- 120V or 120V/277V Option
- 24V power means longer runs



**LinkaLED TAPE LIGHT (24V)**  
LUTKLED24V1  
Spec ID# 2496

## LinkaLED LED 24V Power Supplies



**LinkaLED 24V DIMMABLE  
HARDWARE DRIVER**  
LD522V024  
Spec ID# 2550



**LinkaLED 24V/10W  
HARDWARE DRIVER**  
LD529V024-10  
Spec ID# 2499



**LinkaLED 24V/60W  
HARDWARE DRIVER**  
LD533V024  
Spec ID# 2598



**LinkaLED 24V/24W  
PLUG-IN DRIVER**  
LD5V24-24-PI  
Spec ID# 2503

All drivers for use with all LinkaLED 24V Products

## LinkaLED LED 24V Accessories

### LinkaLED Accessory Features

- Easy wiring using 4-pin connectors



**LinkaLED POWER  
INTERCONNECT**  
LUTKLED-PC04  
LUTKLED-PC16  
Spec ID#2502



**LinkaLED END FEED  
CONNECTOR**  
LUTKLED-PH40  
Spec ID#2501



**LinkaLED  
L-SHAPE CONNECTOR**  
LULEDB-L  
Spec ID#2553



**LinkaLED 8-PORT  
POWER HUB**  
LUTKLED-PX8  
Spec ID#2497



**LinkaLED  
T-SHAPE CONNECTOR**  
LULEDB-T  
Spec ID#2552



**LinkaLED 1 into 3  
POWER CONNECTOR**  
LULED-PC3  
Spec ID#2554



**LinkaLED X-SHAPE  
CONNECTOR**  
LULEDB-X  
Spec ID#2551



**LinkaLED 3-WAY  
INTER-CONNECTOR**  
LULEDB-T-4  
Spec ID#2555

All connectors for use with all LinkaLED 24V Products

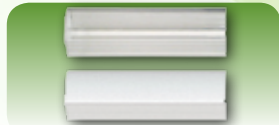


# LED Cabinet & Display Lighting Quick Selection Guide

## Wet Location Bar Light (24V)



**WET LOCATION BAR (24V)**  
LULEDBW24  
LULEDBW48  
Spec ID# 2488



**LinkaLED BAR COVER**  
LULEDB-CC48  
LULEDB-FC48  
Spec ID# 2490



**WET LOCATION BAR ACCESSORIES**  
LULEDBW-PC24  
LULEDBW-PH72  
Spec ID# 2513



**MOUNTING CLIPS**  
LULEDB-BR00  
LULEDB-BR30  
Spec ID# 2491

## LinkaLED 120V AC LED Bars

### LinkaLED 120V LED Bar Light Features

- Self contained: Driver pre-installed
- Easily link end-to-end for modularity
- Convenient Integral On/Off switch
- Glass safety lens
- Multiple knock-outs

## Wet Location Bar 24V Power Supplies

### Wet Location Bar Light Features

- For Wet locations like: Kitchens, baths, wet bars, spas and covered outdoor locations
- Modular design, No soldering or flimsy connectors
- Water-tight gasketed connections



**LinkaLED 24V DIMMABLE HARDWARE DRIVER**  
LD522V024  
Spec ID# 2489



**LinkaLED 24V/10W HARDWARE DRIVER**  
LD529V024-10  
Spec ID# 2597



**LinkaLED 24V/60W HARDWARE DRIVER**  
LD533V024  
Spec ID# 2598



**LinkaLED 24V/24W PLUG-IN DRIVER**  
LD5V24-24-PI  
Spec ID# 2492



**LinkaLED 120V Bar**  
LULED1608A  
LULED3216A  
LULED804A  
Spec ID# 2111

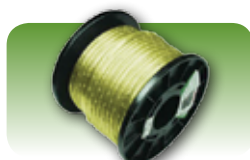


**LinkaLED 120V BAR ACCESSORIES**  
LKULED-P1 LKULED-PC24  
LKULED-P6 LKULED-PMINI  
Spec ID# 2248

## Duralight LED 2-Wire Rope Light

### LED Rope Light Features

- Flexible yet durable
- Field Cuttable where marked
- Versatile mounting options
- Several colors: Blue, Cool White, Green, Red, Warm White, Yellow.



**LED ROPE LIGHT ROLL**  
LLED150  
LLED1  
Spec ID# 651

## LED 2-Wire Rope Light Accessories



**POWER CONNECTOR**  
LD23  
Spec ID# 1277



**SPLICE CONNECTOR**  
LD24  
Spec ID# 1278



**T-CONNECTOR**  
LD25  
Spec ID# 1279



**PLASTIC MOUNTING CLIP**  
LD26  
Spec ID# 1280



**END CAP**  
LD27  
Spec ID# 1281



**INVISIBLE SPLICE**  
LD29  
Spec ID# 1283



**6' LED PLUG-IN POWER CORD**  
LLED22  
Spec ID# 1284

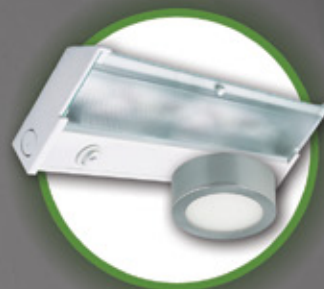


Other Great LED Products by LITON

**LITON**<sup>®</sup>  
L I G H T I N G



Safety Lighting



Under Cabinet  
Cabinet Bars  
Puck light

# LED Energy Efficient Products



© 2013 LITON Lighting  
"The Complete Lighting Solution"  
Liton Lighting is a division of  
EEMA Lighting Group  
5461 West Jefferson Boulevard  
Los Angeles, CA 90016  
Phone. 1.800.515.4880  
Visit us on the web: [www.liton.com](http://www.liton.com)

