



Felina™

FALL 2016

LANA



BASIC



WHITE (WHT)

BASIC



BLACK (BLK)

BASIC



MOCHA (MCA)

new

DELIVERY 8/25-9/15



TANGO RED (TGR)

LANA

FEATHERED SCROLL MOTIF EMBROIDERY ON TULLE

Fabric Content: Tulle:100% Polyester

Embroidery: 100% Polyester



110040

UNLINED

32-40 C,D,DD,DDD,G

MSRP \$44.

\$19.80



530040

THONG

S,M,L,XL

MSRP \$22.

\$9.90

- Plunge balconette silhouette with scalloped neckline
- Cups are lined in a fine tulle for added support and opacity
- Clean finish mesh wings for comfort and support

MARIELLE



BASIC



BLACK (BLK)

BASIC



VANILLA (VNL)

BASIC



SUGAR BABY (SBY)

new

DELIVERY 9/25-10/15



DEEP TEAL (DTL)

MARIELLE

POINT D'ESPRIT WITH STRETCH WOVEN GEORGETTE

Fabric Content: 78% Polyester, 22% Spandex
Point d'esprit: 100% Nylon

150789
DEMI PUSH-UP
SEAMLESS PAD
34-36 A; 32-36 B,D
32-38 C
MSRP \$42.
\$18.90
Available in Black
and Vanilla Only



110789
DEMI UNLINED
FULL BUSTED
34-38 B; 32-38 C
32-40 D,DD,DDD
MSRP \$42.
\$18.90



670789
BIKINI
S,M,L,XL
MSRP \$19.
\$8.55



530789
LOW RISE
THONG
S,M,L
MSRP \$18.
\$8.10
Available in Black
and Vanilla Only

- Point d'esprit with a feather light woven stretch
- Contrast decorative stitching which mimics a pin tuck
- Stretch woven georgette
- All day comfort paired with modern sophistication

AUBRIE



BASIC



BLACK (BLK)

BASIC



GRAY HEATHER (GYH)

BASIC



FAWN (FWN)

AUBRIE

MODAL WITH LACE TRIM

Fabric Content: 91% Modal, 9% Spandex
Lace: 80% Nylon, 20% Spandex



130755
FULL COVERAGE
SEAMLESS MEMORY FOAM
CONTOUR w/CONVERTIBLE
STRAPS
32-38 C, D, DD, DDD
MSRP \$42.
\$18.90



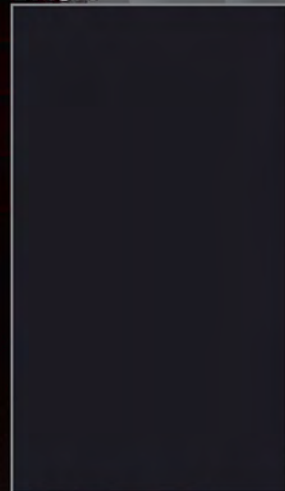
730755
LOW RISE
CHEEKY BOYLEG
S, M, L, XL
MSRP \$14.
3 for \$36.
\$5.40

- 44 gauge needleout micro modal
- Memory foam contour bra with convertible straps
- Seamless t-shirt bra

BODY LUXE



BASIC



BLACK (BLK)

BASIC



WARM NUDE (WMN)

BODY LUXE

SEAMLESS MICRO SHEEN WITH CLEAN BONDED EDGES
& COMFORT EMBEDDED WIRES TECHNOLOGY

Fabric Content: 82% Nylon, 18% Spandex



150671
STRAPLESS CONTOUR
W/CUSHION WIRE
34-36 B
32-38 C,D,DD
MSRP \$48.
\$21.60



730671
HIPSTER
S,M,L,XL
MSRP \$19.00
\$8.55

- Stay 4 sure silicone film is a patented application on the strapless
- Dermatologist and hypoallergenic approved
- Graduated padding creates a natural lift
- One piece construction for the ultimate in “no show” under garment

ELIZABETH



BASIC



BLACK (BLK)

BASIC



TAUPE (TPE)

ELIZABETH

DIAMOND PATTERN MESH WITH LEAVERS LACE TRIM

Fabric Content: 75% Nylon, 25% Spandex
Lace: 92% Nylon, 8% Spandex



110018

UNLINED
34-38 B
32-38 C,DDD
32-40 D,DD
32-36 G
MSRP \$44.
\$19.80



730018

HIPSTER
S,M,L,XL,XXL
MSRP \$19.
\$8.55

- Unlined semi-demi cup of textured diamond patterned mesh
- Wings and back cleaned finished and lined with power mesh for perfect fit and all day comfort
- Front straps with a pleated detail
- Comfort hipster silhouette with lace at the waistline

ENCHANTED



BASIC



BLACK (BLK)

BASIC



BARE (BAR)

BASIC



ALMOST NUDE (ATN)

ENCHANTED

STRETCH LACE WITH
44 GAUGE MICRO NYLON

Fabric Content: 77% Nylon, 23% Spandex
Lace: 90% Nylon, 10% Spandex



130566
MEMORY FOAM CONTOUR
32-38 C, D, DD,DDD
32-36 G
MSRP \$44.
\$18.92
Available in Black, Bare, and
Almost Nude Only



150566
ADD-A-CUP SIZE
W/CONVERTIBLE STRAP
32-36 A,B,C,D
MSRP \$38.
\$17.10
Available in Black and
Almost Nude Only



630566
BIKINI
S,M,L,XL
MSRP \$16.
\$6.88
Available in Black
and Bare Only

- Memory foam contour bra creates a flawless shape
- Contemporary lace center front
- Soft to touch micro nylon
- Cushioned straps for added comfort

HARLOW



BASIC



BLACK (BLK)

BASIC



ALABASTER (ALB)

BASIC



CHROME (CHM)

HARLOW

CHANTILLY LACE OVERLAY

Fabric Content: 83% Nylon, 17% Spandex
Mesh: 69% Nylon, 31% Spandex



5894
DEMI UNLINED
32-40 B,C,D,DD,DDD
MSRP \$40.
\$18.00



794P
BIKINI
S,M,L,XL
MSRP \$18.
\$8.10



694P
LOW RISE G-STRING
S,M,L,XL
MSRP \$14.
\$6.30
Available in Black
and Alabaster Only

- Classic demi bra silhouette with high center front
- Stabilized strap accented with bow
- Leotard back for all day comfort

JOSLYN

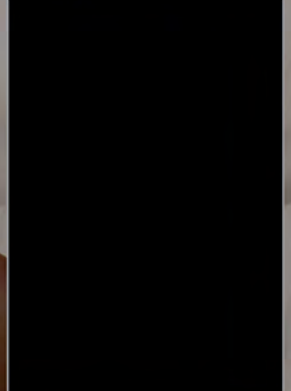


BASIC



SUGAR BABY (SBY)

BASIC



BLACK (BLK)

JOSLYN

BONDED BRUSHED MICROFIBER

Fabric Content: 76% Polyamide, 24% Elastane

210030
SEAMLESS
CONTOUR
32-40 C,D,DD
32-38 DDD
32-36 G
MSRP \$50.
\$22.50



200030
SEAMLESS
UNLINED
32-40 C,D,DD
32-38 DDD
32-36 G
MSRP \$48.
\$21.60

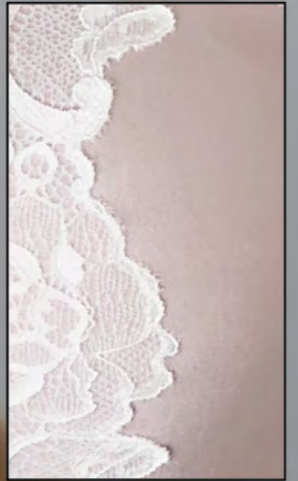


- Bonded edges throughout that hug the body for the ultimate in second-skin fit
- Built up wing with plunge leotard back for additional contouring comfort
- Fully adjustable straps
- 210030: Contoured t shirt bra with embedded wire
Slims side spillage and lifts bust
3/4 wire placement allows full support without pinching
- 200030: Double ply seamless cups for added comfort and support
Perfect coverage fit for all wardrobe needs

LYDIA



BASIC



MISTY TAUPE (MYT)

BASIC



FROST GRAY (FGY)

LYDIA

MICRO WITH CLIPPED SWING LACE

Fabric Content: Micro 82% Nylon 18% Spandex
Lace 89% Nylon 11% Spandex



150052
PUSH UP
34 A
32-36 B
32-38 C,D
MSRP \$40.
\$18.00



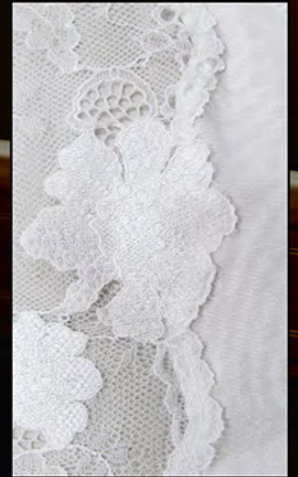
720052
CHEEKY HIPSTER
S,M,L
MSRP \$16.
\$7.20

- Satin finish Micro fiber trimmed in a corded hand clipped lace
- Demi Plunge Push Up with leotard back in self fabric
- Low rise coordinate cheeky panty

MONICA



BASIC



WHITE (WHT)

BASIC

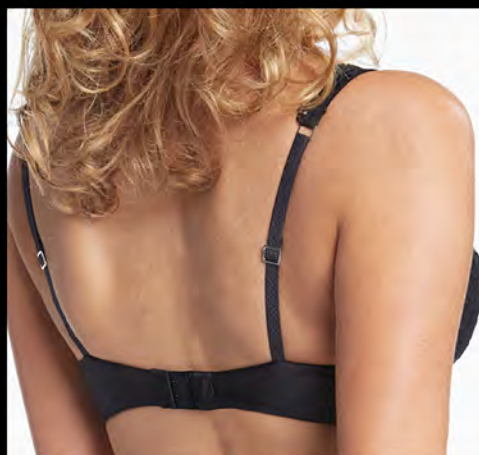


BLACK (BLK)

MONICA

STRETCH FLORAL JACQUARD LACE WITH MICROFIBER

Fabric Content: Micro 76% Nylon 24% Spandex
Lace: 55% Nylon 34% Polyester 11% Spandex



110026
UNLINED SEMI-DEMI
32-36 B
32-38 C,D,DD,DDD
MSRP \$42.
\$18.90



530026
THONG
S,M,L
MSRP \$18.
\$8.10

- Intricate floral motif with clipped scallop edge
- Plunge semi demi silhouette with built up straps
- Cups are lined in a fine denier for added support
- Clean finishing of bra and thong for added comfort

PRISCILLA



BASIC



BLACK (BLK)

BASIC



SUGAR BABY (SBY)

PRISCILLA

FLORAL SWISS EMBROIDERY

Ground: 100% Nylon, Embroidery: 100% Polyester
Fabric: 78% Polyester, 22% Spandex



150019
ADD-A-CUP SIZE
32-36 A,B,C,D
MSRP \$48.
\$21.60
Available in **Black Only**



110019
UNLINED
34-38 B; 32-38 C,DDD
32-40 D,DD; 32-36 G
MSRP \$44
\$19.80



530019
THONG
S,M,L
MSRP \$22.
\$9.90
Available in **Black Only**



630019
BIKINI
S,M,L,XL,XXL
MSRP \$24.
\$10.80

- Dramatic floral embroidery combined with stretch woven georgette
- Clean finished wings and back for ultimate comfort
- Silver toned hardware

SABRINA



BASIC



BLACK (BLK)

BASIC



WHITE (WHT)

SABRINA

EMBROIDERED TULLE WITH SOFT TOUCH MICRO SHEEN

Fabric Content: 80% Nylon, 20% Spandex
Lace: 100% Polyester



150013
PLUNGE CONTOUR
34-36 B
32-38 C,D,DD,DDD
32-36 G
MSRP \$44.
\$19.80
Available in White
and Black Only



190013
DEMI UNLINED
32-38 C,D,DD,DDD
32-36 G
MSRP \$40.
\$18.00



630013
BIKINI
S,M,L,XL
MSRP \$20.
\$9.00

- Fine line floral spray embroidery on tulle
- Soft to touch micro sheen for ultimate comfort
- Laminated self fabric straps on both bra silhouettes
- Both bra silhouettes available up to 36G cup

SPECIALTY ESSENTIALS

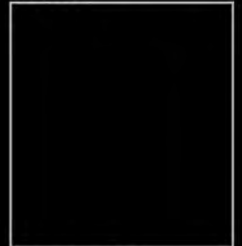
HINT OF SKIN



6202
CONTOUR STRAPLESS SEAMLESS
 32-38 B,C,D
 MSRP \$42.
 \$18.90
 Available in Black and Bare Only

- Sew free seamless construction
- Ultimate in no show foundations
- Embedded wire for added comfort

BASIC



BLACK (BLK)

BASIC



WHITE (WHT)

BASIC



BARE (BAR)

BASIC



FAWN (FWN)

BASIC



WARM NUDE (WMN)

BRA OF THE YEAR



5312
CONVERTIBLE SEAMLESS STRAPLESS DEEP PLUNGE
 32-36 A
 32-38 B,C,D,DD
 MSRP \$48.
 \$21.60

Fabric Content:
 72% Nylon,
 28% Spandex
 Available in Black,
 White and Fawn Only

- Deep Plunge Strapless for the barest of necklines
- Contoured bump pad for rounded shape with uplift and enhanced cleavage
- Bonded top cup for a smooth close to body fit
- Secured with special elastic wing and silicone for a nonslip garment.
- Special elastic hook and eye designed for added support

SPECIALTY ESSENTIALS

NEW ESSENTIALS

8704
 PUSH UP
 BUSTIER
 W/CLEAN
 BONDED EDGE
 32-36 A
 32-40 B,C,D,DD
 MSRP \$79.
 \$31.60

Fabric Content:
 79% Nylon,
 21% Spandex
 Available in
 Warm Nude Only



- Demi push up neckline for maximum lift
- Clean bonded front bodice garment that shapes and supports
- Lowest possible back

ESSENTIALS

7643
 SEAMLESS PAD
 HIDDEN WIRE
 BUSTIER
 Bare: 32-36 A
 32-42 B,C,D,DD
 Black: 34-36 A
 34-38 B
 32-38 C,D
 White: 32-36 A
 32-42 B,C,D,DD
 MSRP \$72.
 \$32.40

Fabric Content:
 76% Nylon,
 24% Spandex

Available in White,
 Black and Bare Only



- Patented design
- Hidden wire construction for a smooth clean and seamless appeal
- Side flexible boning assures stability of garment
- Seamless push-up cups for uplift and cleavage
- Low back for specialty garment needs.

ESSENTIALS

6043
 LONGLINE
 STRAPLESS
 CONVERTIBLE
 32-38 B,C,D,DD
 MSRP \$52.
 \$23.40

Fabric Content:
 76% Nylon,
 24% Spandex
 Available in Black
 and Bare Only



- Seamless push up cups
- Convertible strapless
- Side flexible boning gives control and support
- Back features a low-profile hook and eye closure
- Clean finish construction for no-show under garments

INVITING

MICRO MODAL WITH LACE TRIM

Fabric Content: 95% Micro Modal, 5% Spandex
Lace: 92% Nylon, 8% Spandex



820038
BRALETTE
W/LACE TRIM
S,M,L
MSRP \$26.
\$11.70
Available in
Barely Pink
and Black
Only



530038
THONG
S,M,L,XL
MSRP \$14.
3 FOR \$36.
\$5.40



730038
HIPSTER
S,M,L,XL
MSRP \$14.
3 FOR \$36.
\$5.40

- Signature micro modal and covered elastic waist
- Geometric lace scallop trims the leg
- Ruched side detail on hipster

BASIC



SUGAR BABY
(SBY)

BASIC



BLACK (BLK)

BASIC



BARELY PINK
(BRP)

LUSH LACE

STRETCH LACE

Lace Content: 74% Nylon, 11% Polyester 15% Spandex

730144
CHEEKY BOY
S,M,L,XL
MSRP \$14.
3 FOR \$36.
\$5.40



- All over stretch floral lace
- Scalloped edge trims the leg
- Center back bow and keyhole detail

BASIC



WHITE (WHT)

BASIC



EBONY (EBN)

SO SMOOTH

MODAL

Fabric Content: 97% Modal, 3% Spandex



101P
LOW RISE THONG
S,M,L,XL
MSRP \$10.
3/\$27.
\$3.50
Available in Black
and Bare Only



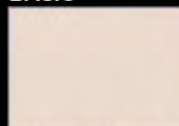
601P
LOW RISE BIKINI
S,M,L,XL
MSRP \$10.
3/\$27.
\$3.50



901P
HI CUT PANTY
S,M,L,XL
MSRP \$10.
3/\$27.
\$3.50

- Super soft micro modal
- Seamless contour cups and low plunge bra
- Smooth under clothes

BASIC



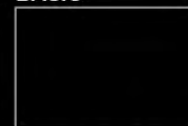
BARE (BAR)

BASIC



WHITE (WHT)

BASIC



BLACK (BLK)

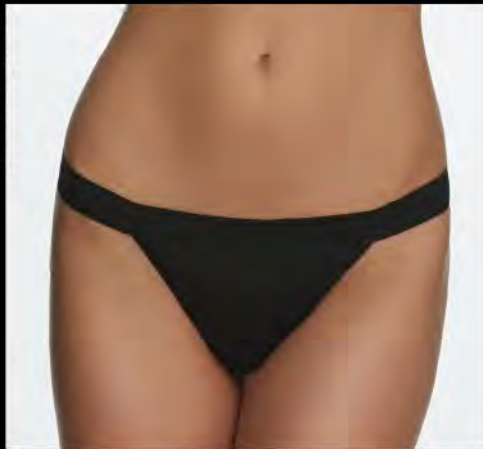
ALLURE

MICRO SOFT TOUCH WITH WIDE ELASTIC WAIST

Fabric Content: 80% Nylon, 20% Spandex

530048

THONG
S,M,L,XL
MSRP \$14.
3 for \$36.
\$5.40

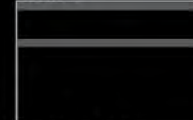


730048

HIPSTER
S,M,L,XL
MSRP \$14.
3 for \$36.
\$5.40

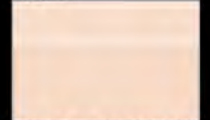
- Micro soft touch for a second skin feel
- Wide smooth elastic waist for comfort and clean lines
- Virtually invisible under clothing

BASIC



BLACK (BLK)

BASIC



SUGAR BABY (SBY)

TREASURE

MICRO PANTY COLLECTION

530025

THONG
S,M,L
MSRP \$12.
3/\$30.
\$4.50

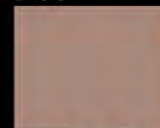


730025

HIPSTER
S,M,L
MSRP \$12.
3/\$30.
\$4.50

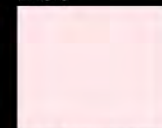
- Micro soft to touch front and back
- Luscious shine
- Comfort bonded waist and legs
- Plush inside elastic for all day comfort

BASIC



CAPPUCCINO (CPC)

BASIC



SOFT PINK (SFP)

BASIC



IVORY (IVR)

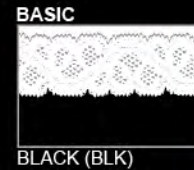
OBSSESSED

MICRO

Fabric Content: 95% Micro Modal, 5% Spandex
Lace: 92% Nylon, 8% Spandex



730055
HIPSTER
S,M,L,XL
MSRP \$14.
3 for \$36.
\$5.40



STUNNING

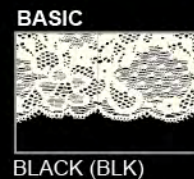
MICRO WITH LACE

Fabric Content: 80% Nylon, 20% Spandex



530053
THONG
S,M,L,XL
MSRP \$14.
3 for \$36.
\$5.40

730053
HIPSTER
S,M,L,XL
MSRP \$14.
3 for \$36.
\$5.40



CHARMING

STRETCH LACE WITH MODAL

Fabric Content: 95% Modal, 5% Spandex
Lace: 90% Nylon, 10% Spandex

530046
LACE BACK
MODAL THONG
S,M,L,XL
MSRP \$12.
3 for \$30.
\$4.50



730046
LACE BACK
MODAL HIPSTER
S,M,L,XL
MSRP \$12.
3 for \$30.
\$4.50



870046
CHEMISE
S,M,L,XL
MSRP \$58.
\$24.36
Available in
White Only



830046
CAMISOLE
S,M,L,XL
MSRP \$29.
\$12.18
Available in Black
and White Only



- Soft to touch modal combined with a contemporary floral lace
- Comfort elastic waist and legs lie flat on the body
- Camisole designed with double spaghetti straps

SUBLIME

50 GAUGE NO PILL MODAL

Fabric Content: 79% Modal, 21% Spandex

53954
THONG
S,M,L,XL
MSRP \$14.
3/\$36.
\$5.40



63954
LOW RISE BIKINI
S,M,L,XL
MSRP \$14.
3/\$36.
\$5.40



83954
CAMISOLE
w/SHELF BRA
S,M,L,XL
MSRP \$32.
\$13.44
Available in
Black Only



67954
HIGH CUT BRIEF
S,M,L,XL
MSRP \$14.
3/\$36.
\$5.40



73954
BOYLEG
S,M,L,XL
MSRP \$14.
3/\$36.
\$5.40



- 50 Gauge micro modal with lycra
- Fabric is anti-pilling and will not twist on body
- Camisole designed with a shelf-bra



ENDLESS SUMMER



DELIVERY 6/25-7/15



BLACK (BLK)

DELIVERY 6/25-7/15



HEATHER CHARCOAL
(HCH)

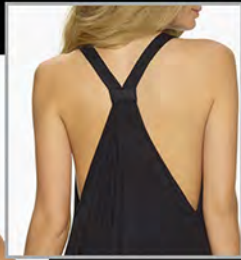
DELIVERY 6/25-7/15



HEATHER DENIM (HTD)

ENDLESS SUMMER

2x2 Rib and Smooth Modal
95% Micro Modal, 5% Spandex



870057
T-BACK
CHEMISE
S,M,L,XL
MSRP \$45
\$20.25



850057
BOAT NECK
CHEMISE
W/SLIT BACK
S,M,L,XL
MSRP \$45
\$20.25



790057
3/4 DOLMAN
SLEEVE
S,M,L,XL
MSRP \$45
\$20.25



760057
SLOUCHY
LOUNGE PANT
S,M,L,XL
MSRP \$35
\$15.75



890057
BOAT NECK
MAXI
W/SLIT BACK
S,M,L,XL
MSRP \$55
\$24.75

APRÈS SKI



DELIVERY 8/25-10/25



BLACK (BLK)

DELIVERY 8/25-10/25



HEATHER GRAY (HGY)

APRÈS SKI

French Terry & Quilted
Poly/Rayon/Spandex Cotton/Poly



980075
FRENCH TERRY TOP
W/DRAWSTRING
OVERSIZED TURTLENECK
& QUILTED TRIM
S,M,L,XL
MSRP \$76
\$30.40



760075
PANT W/QUILTED
WAIST DETAIL &
CINCHED ANKLE
S,M,L,XL
MSRP \$49
\$19.60

CITY TERRY



DELIVERY 8/25-10/25



BLACK (BLK)

DELIVERY 8/25-10/25



HEATHER GRAY (HGY)

CITY TERRY

French Terry
Poly/Rayon/Spandex



970074
LAYERING COWL HOODIE
W/DRAWSTRING NECKLINE
S,M,L,XL
MSRP \$54
\$21.60



980074
FRENCH TERRY SWEATSHIRT
S,M,L,XL
MSRP \$62
\$24.80



910074
PONCHO
SIDE ZIPPERED DETAIL
S,M,L,XL
MSRP \$72
\$28.80

FAIR ISLE



DELIVERY 8/25-10/15



HEATHER GRAY/
IVORY (HGI)

FAIR ISLE

French Terry & Fair Isle Knit
Poly/Rayon/Spandex Poly/Cotton/ Rayon



860076
KNIT ROMPER
S,M,L,XL
MSRP \$68
\$27.20



760076
NARROW PANT
W/KNIT CUFFS
S,M,L,XL
MSRP \$54
\$21.60

ASSCHER

DELIVERY 9/25-10/15



BLACK (BLK)

DELIVERY 9/25-10/15



GRAPE WINE (GPW)



ASSCHER

Micro Modal with Open Mesh



850068
CHEMISE
S,M,L,XL
MSRP \$48
\$19.20



930068
ASYMMETRIC TOP
S,M,L,XL
MSRP \$42
\$16.80



940068
LONG SLEEVE TOP
S,M,L,XL
MSRP \$48
\$19.20



770068
LEGGING
S,M,L,XL
MSRP \$36
\$14.40

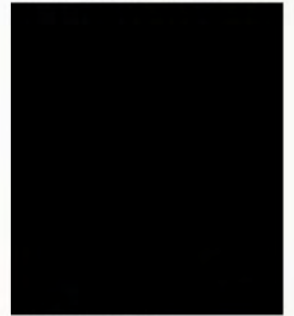


760068
PANT
S,M,L,XL
MSRP \$38
\$15.20

RADIANT



DELIVERY 9/25-10/15



BLACK (BLK)

DELIVERY 9/25-10/15



WINE (WNE)

RADIANT

Stretch Velvet and Mesh



850067
CHEMISE
S,M,L,XL
MSRP \$56
\$22.40



810067
CAMI TOP
S,M,L,XL
MSRP \$40
\$16.00



750067
SHORT KIMONO
S,M,L,XL
MSRP \$68
\$27.20



770067
LEGGING
S,M,L,XL
MSRP \$34
\$13.60



760067
PANT
S,M,L,XL
MSRP \$42
\$16.80

GENTEEL



DELIVERY 2/25



HEATHER GRAY/
SUGAR BABY (HSB)

DELIVERY 2/25



HEATHER DENIM /
GRAY (HDG)

GENTEEL

95% Micro Modal Heather
5% Spandex



900189
CHEMISE W/
TRIANGLE
LACE CUP &
LACE T-BACK
S,M,L,XL
MSRP \$42.
\$18.90



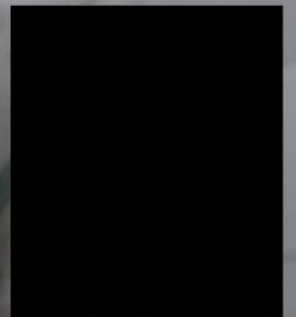
900190
2 PC SHORTIE
CAMI W/ PINTUCK
BODICE, CRISS-CROSS
BACK & LACE HEM
SHORT W/ ELASTIC
WAIST
S,M,L,XL
MSRP \$48.
\$21.60

URBAN LOUNGE



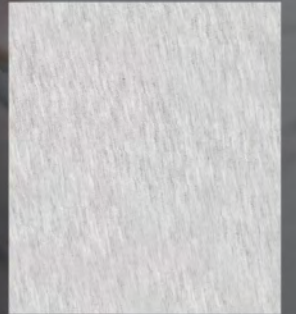
From a relaxed morning at home to a stroll through the farmer's market, this soft modal blend collection will comfortably take you wherever you want to go. These versatile mix and match loungewear essentials are designed to give you a chic look for life's more casual moments.

BASIC



BLACK (BLK)

BASIC



HEATHER GRAY (HGY)

BASIC



HEATHER DENIM (HTD)

URBAN LOUNGE

95% Micro Modal, 5% Spandex

850056
T-BACK
CHEMISE
S,M,L,XL
MSRP \$39
\$17.55



840056
BRALETTE
S,M,L,XL
MSRP \$16
\$7.20

860056
JUMPSUIT
S,M,L,XL
MSRP \$42
\$18.90
Available in
Black and
Heather Gray
Only



KEY ITEMS



2354B
 56% COTTON / 37% MODAL
 / 7% SPANDEX
 S/S V-NECK TEE
 S,M,L,XL
 MSRP \$24 / 2 FOR \$39
 \$7.80
 Available in Black and White Only

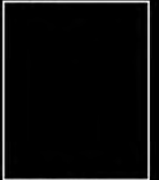


2074
 L/S CREW NECK TEE
 S,M,L,XL
 MSRP \$24 / 2 FOR \$39
 \$7.80
 Available in Black, White,
 and Heather Gray Only



90117
 95% MICRO MODAL
 / 5% SPANDEX
 CLEAN FIT DRAWSTRING
 LOUNGE PANT
 W/ SELF DRAWSTRING
 S,M,L,XL
 MSRP \$29
 \$13.05
 Available in Black, Heather Gray,
 Cheetah, Pink Cheetah, and Pink/Gray Stripe

BASIC



BLACK (BLK)

BASIC



WHITE (WHT)

BASIC



HEATHER GRAY (HGR)

BASIC



PINK CHEETAH (OPC)



PINK/GREY STRIPE
 (PGS)



CHEETAH (CTH)

TERMS AND CONDITIONS

A statement of policy by PIEGE CO., INC. for the guidance of customers.

TERMS OF PAYMENT:

8%/10 EOM or Net 30. The 8% discount is for an on time payment and is not a trade discount. Please adjust your terms to allow on time payment. Delinquent account balances are subject to a late payment charge of 1.5% per month, or any part thereof, on the outstanding balance. PIEGE CO., INC., within its sole discretion, may withhold delivery of new orders in the event of non-compliance with the above terms of payment.

ORDER CANCELLATION:

Customer order cancellation must be received by PIEGE CO., INC. in writing in order for such cancellation to be effective. If, for any reason whatsoever, Customer order cancellation occurs subsequent to shipment by PIEGE CO., INC. customer will be responsible for any and all freight cost. In such event, the merchandise must be returned and received by PIEGE CO., INC. in the original, unbroken shipping carton and a 15% restocking fee will apply. Also, any refused shipment will be subject to a \$25 handling fee.

- If for any reason there are any exceptions, revisions or changes to the customer's purchase order, PIEGE CO., INC. will contact the buyer for approval prior to shipment. The said approval must be received via fax or e-mail.
- PIEGE CO., INC. will accept cancellations for BASIC MERCHANDISE providing the written notice is received ten (10) days prior to start ship date. PIEGE CO., INC. will not accept cancellations for FASHION MERCHANDISE.

EXAMINATION OF MERCHANDISE:

Upon receipt, it is the responsibility of Buyer to inspect that all merchandise delivered matches its order. The Buyer must make any claims of defects, including but not limited to those related to shortages, quality, or specification, within five (5) days after the receipt of merchandise.

Any claim for shortage or damage must be made by customer, in writing to: PIEGE CO., INC., Attn. Customer Service, 20120 Plummer St., Chatsworth, CA 91311.

RETURN POLICY:

Important – All claims must be made, in writing, within five (5) days of receipt of merchandise. It is the responsibility of Buyer to inspect upon receipt, that all merchandise delivered matches its order. No merchandise is sold on a guaranteed sale basis, or with privilege of return. No merchandise may be returned without a return authorization number. A request must be made for such authorization number in writing to: PIEGE CO., INC., Attn. Customer Service, 20120 Plummer St., Chatsworth, CA 91311. All merchandise must be returned in its original shipping condition. Merchandise returned without prior authorization will be refused at Buyer's expense. The Seller will charge Buyer a 15% rehandling charge for any returned merchandise. Merchandise returned which does not conform either in quantity or in styles/sizes/colors to the return authorization will be returned to the buyer at buyer's expense.

MINIMUM ORDER:

PIEGE CO., INC. has the following order requirements.

- Felina: Initial order \$500, re-order \$200.
- Unveiled: Initial order \$500, re-order \$200.
- Paramour: Initial order \$500, re-order \$200.
- Jezebel : Initial order \$400, re-order \$200.

Orders cannot be combined within the different lines so as to meet minimum requirements. A surcharge of \$25 will be added to any re-order less than the said re-order requirements.

SHIP WINDOW :

For basic merchandise, re-order is five (5) to seven (7) working days from the day that the order is received.

COD'S:

Upon completion of the packing of a COD order, the buyer will be provided with shipping information. All COD orders must ship out of the PIEGE CO., INC. warehouse within five (5) working days after the merchandise is packed. Cancellation of packed COD orders will be subject to \$25 re-stocking fee.

- If the order is received past the cancellation date, it must be approved by the customer prior to shipping.
- If the COD order is refused, the customer will be contacted in order to finalize the procedure. The customer will be charged for all shipping expenses incurred.
- If the customer accepts the order, the customer will be responsible for the shipping cost of the returned package (payment must be received prior to re-shipping).
- If the customer refuses the order, a \$25 return fee will be incurred. Additional orders will only be accepted once the return fee is satisfied.

NEW ACCOUNTS:

New customer credit must be established to the satisfaction of **PIEGE CO., INC.** within its sole discretion. Until such time as **PIEGE CO., INC.**, and/or its factor; have approved the Customer's credit worthiness, Customer payment for any and all orders placed must be received prior to delivery by **PIEGE CO., INC.** A 25% deposit is required for all new accounts paying COD.

SHIPPING CHARGES:

All orders will be shipped F.O.B. Chatsworth, CA. Customer is responsible to pay all shipping charges.

AGREEMENT AND ACKNOWLEDGEMENT:

Buyer(s) have carefully read and agree to these Terms and Conditions. Buyer authorizes PIEGE CO., INC. to verify the credit of the Company and/or the individual(s) whose signature(s) appears on this or the other documents specified above. Buyer and guarantor(s) authorize its bank(s) and/or business references to release credit information of Buyer and/or Guarantor(s) as requested by PIEGE CO., INC.

Felina™



CORPORATE OFFICE
20120 PLUMMER STREET
CHATSWORTH, CA 91311-5448
PHONE 818.727.9100
FAX 818.727.0059

NEW YORK OFFICE
12 WEST 32ND STREET, 4TH FLOOR
NEW YORK, NY 10001
PHONE 212.683.9205
FAX 212.213.6959

WWW.FELINAUSA.COM